

## Saint Louis University Fact Sheet

### Academic Year 2018-2019

Latest exchange information link: <https://www.slu.edu/admission/international/exchange-student.php>

At A Glance	
<b>Founded:</b> 1818	<b>Religious affiliation:</b> Catholic, Jesuit
<b>Location:</b> St. Louis, Missouri Madrid, Spain	<b>Total enrollment:</b> 12,853 8,155 undergraduate 4,698 post-baccalaureate
<b>Colleges:</b> College of Arts and Sciences Richard A. Chaifetz School of Business Doisy College of Health Sciences School of Nursing College for Public Health and Social Justice School for Professional Studies School of Medicine Parks College of Engineering, Aviation & Technology College of Education and Public Services School of Law	<b>Student diversity:</b> 7% African-American 9% Asian 6% Hispanic/Latino 5% Multirace/Other 2% Not specified 71% White
<b>Total faculty:</b> 2,348 99% of tenured and tenured-track faculty members hold the highest degree in their field	<b>Global origin:</b> 93% United States 7% International
<b>Website:</b> <a href="http://www.slu.edu">http://www.slu.edu</a>	<b>Athletics:</b> 18 NCAA Division I sport teams in the Atlantic 10 Conference

Contact Info	
<b>Tara Maulood</b> <b>Undergraduate Exchange Students</b> International Admission Counselor Office of Admission tara.maulood@slu.edu Tel: +1-314-977-3842	<b>Jill E. Newman</b> <b>Graduate Exchange Students</b> <b>Recruiting and Graduate Admissions</b> <a href="mailto:jill.newman@slu.edu">jill.newman@slu.edu</a> <a href="mailto:graduate@slu.edu">graduate@slu.edu</a> Tel: +1-314-977-3536

**Annie Cavedine**  
 Director  
 Office of International Services  
 anne.cavedine@slu.edu  
 Tel: +1-314-977-4081

**Office of International Services**  
 Des Peres Hall, Room 102  
 3694 West Pine Mall, St. Louis, Missouri, 63108  
 United States  
 internationalservices@slu.edu  
 Tel: +1-314-977-2318 Fax: +1-314-977-3412  
 Website: www.slu.edu/international-services

## Calendar

### 2018 Fall Semester

Airport Pick-Ups	August 17-18, 2018
Orientation	Begins August 20, 2018
Classes Begin	August 27, 2018
Classes End (Final Exam)	December 18, 2018

### 2019 Spring Semester

Airport Pick-Ups	January 8-9, 2019
Orientation	Begins January 10, 2019
Classes Begin	January 14, 2019
Classes End (Final Exam)	May 14, 2019

## Application Deadlines

### Undergraduate Application Deadlines

Fall	May 1
Spring	October 15

### Graduate Application Deadlines

Fall	<p>May 1          Deadlines do vary by program and select programs may have deadlines before May 1, please check with the specific graduate program for the official program deadline through the following webpage:  <a href="https://www.applyweb.com/slugrad/index.ftl">https://www.applyweb.com/slugrad/index.ftl</a></p>
Spring	<p>October 1          Deadlines do vary by program and select programs may have deadlines before October 1, please check with the specific graduate program for the official program deadline through the following webpage:  <a href="https://www.applyweb.com/slugrad/index.ftl">https://www.applyweb.com/slugrad/index.ftl</a></p>

## Undergraduate Exchange Student Admission

Undergraduate exchange students take courses at Saint Louis University for either a semester or full academic year. Exchange students **must** be approved for short-term study at Saint Louis University and their home institution before applying. Take these steps to become an exchange student at Saint Louis University:

1. Contact the Office of International Services (Annie Cavedine, [anne.cavedine@slu.edu](mailto:anne.cavedine@slu.edu)) to make sure there is a current exchange agreement in place and to confirm the eligibility of exchange students for the proposed term.
2. Ask your adviser to send an approval e-mail. Your adviser should e-mail **Tara Maulood**, International Admission Counselor at [tara.maulood@slu.edu](mailto:tara.maulood@slu.edu), approving your participation in the exchange program. The e-mail must include: your name, the name of your university and the semester you plan to attend SLU.

3. Complete the application form **online** through our website:  
<http://www.slu.edu/apply.php#freshmanapp>
4. Send your original transcripts. Photocopies that have been certified (stamped) by the issuing institution are acceptable, but if you submit a certified copy, you must present the originals when you arrive. All official transcripts must be accompanied by translations in English. **Transcripts must be received by the Office of Admission sealed in the original envelope provided by your institution. Transcripts submitted via e-mail or fax will NOT be accepted.**
5. Send proof of financial support.  
You must send:
  6. An original statement or letter (certification) from the sponsor's bank (on bank letterhead) verifying that such funds currently are available and will be so for each subsequent year of your study at the University. The financial evidence must cover at least the amount of expenses needed for the first year of your study, AND
  7. An original letter (declaration) of financial support from the person(s) or sponsoring agency providing funds for your tuition and living expenses for the duration of your study at Saint Louis University.  
The estimated cost of living for one year is approximately \$16,836 USD and for one semester is \$8,418 USD.  
**You must send an original letter and bank statement; copies are NOT accepted.**

Please submit all documents to:

Saint Louis University  
International Admission  
DuBourg Hall, Room 149  
One North Grand Blvd.  
St. Louis, MO 63103  
USA  
E-mail: tara.maulood@slu.edu

Once the Office of Admission has received all of the required information, your file is reviewed to determine eligibility for admission to the University. In reviewing your file, first and foremost, the office examines your academic performance. Solid academic performance in college preparatory course work is a primary concern in determining your admission status. All students are notified of their admission status upon completion of this thorough review.

## Graduate Exchange Student Admission

Graduate exchange students take courses at Saint Louis University for either a semester or full academic year. Graduate exchange students **must** be approved for short-term study at Saint Louis University and their home institution before applying. Exchange students are not eligible to take coursework in all graduate education programs at Saint Louis University.

Take these steps to determine your eligibility to take graduate coursework at Saint Louis University and to complete a graduate application as an exchange student:

1. Contact the Office of International Services (Annie Cavedine, [anne.cavedine@slu.edu](mailto:anne.cavedine@slu.edu)) to make sure there is a current exchange agreement in place and to determine if exchange students are eligible to take coursework in the requested graduate education program.
2. Go to [graduate.slu.edu](http://graduate.slu.edu) and click "Apply."
3. Complete the application online. You must answer YES to the question: "Are you completing an Exchange Program"? on page 1.
4. Email the application to Jill Newman, the Graduate Admission Counselor, at [jill.newman@slu.edu](mailto:jill.newman@slu.edu).
5. Mail the official transcripts to the graduate admission office:  
Saint Louis University Graduate Admission  
One North Grand Blvd.  
DuBourg Hall, Suite 150  
St. Louis, MO 63103
6. Once the application is complete, it will be reviewed by the Academic Department in which the student would like to take graduate courses. It is the Academic Department that will determine whether or not a student is accepted to take graduate coursework.
7. All students are notified of their admission status upon completion of this review.

\*Students accepted to take courses in Graduate Education may take one or two courses at the undergraduate level for a total of up to 9 academic credit hours. At least one course must be a 3 credit hour graduate course at the 500 level or above. If students do not plan to take at least one 3 credit hour graduate level course, they will need to complete an undergraduate application.

## Undergraduate & Graduate Language Requirements

All international applicants are required to demonstrate their English proficiency, which can be done by submitting any one of the following:

- 550 on the paper-based TOEFL (PBT)
- 80 on the internet-based TOEFL (IBT)
- 6.5 on the IELTS
- 54 on the PTE
- Signed documentation from your current academic institution verifying your English proficiency
- A documented interview conducted by a Saint Louis University representative via a teleconferencing method such as Skype, FaceTime or another method. (To request this method, please contact the office of admission)

Please note:

- Exceptions may be made on an individual basis.
- Saint Louis University reserves the right to require additional testing of any incoming student's English skills.
- Saint Louis University's ETS code for TOEFL and SAT scores is 6629. Saint Louis University's ACT code is 2352.
- TOEFL and IELTS scores are considered valid for two years. If it is determined that additional English studies are necessary, you may be required to take the appropriate ESL and EAP courses prior to, or concurrent with, enrolling in the University's academic programs. Graduate student requirements are determined by their program.

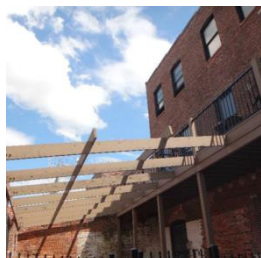
## Accommodation

**On-Campus Housing Accommodations:**

Saint Louis University offers a variety of on-campus housing accommodations. Brief descriptions of these housing options are listed below.

Students interested in living on-campus must complete a housing application and contract via [myslu.slu.edu](http://myslu.slu.edu) and will need to pay a \$450 USD housing deposit.

Learn more about campus housing at [slu.edu/reslife.xml](http://slu.edu/reslife.xml).



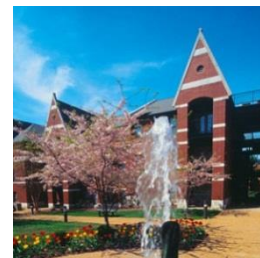
Robert May Hall

Single, double, and triple bedroom apartments with 12-month contracts for graduate and professional students. Formerly the West Locust Lofts.



DeMattias Hall

Students who are members of several Greek organizations recognized by Saint Louis University, 12 fraternities and 6 sororities.



Village Apartments

Single, double, triple, and quad occupancy furnished apartments designed with a living room, kitchen, and washer/dryer units.



Marchetti Towers

Two apartment complexes on the east side of campus. There are over 260 apartments available to upperclassmen students.



Grand Forest Apartments

83 furnished 2-bedroom apartments, many with patios or balconies, housing close to 200 students.



Spring Hall

First- and second-year students, Spring Hall features single and double suite-style rooms with a total of 450 beds



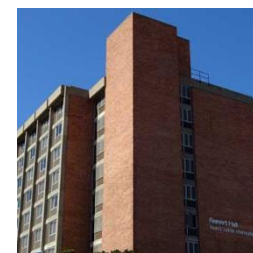
Fusz Hall

Six floors, mainly single rooms, several double rooms and a few triple rooms, in a co-educational building.



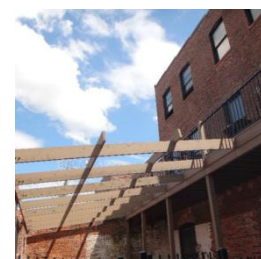
Griesedieck Complex

The largest building on campus and primarily houses first-year and sophomore residents.



Reinert Hall

First-year and sophomore residents living in triple and quad occupancy rooms with private baths and air-conditioning.



<p style="text-align: center;"><b>Grand Hall</b></p> <p>Designed for first- and second-year students, Grand Hall features single and double suite-style rooms, a campus dining hall, classrooms, study lounges and an outdoor plaza.</p>	<p style="text-align: center;"><b>Marguerite Hall</b></p> <p>This unique residential community offers semi-private bathrooms shared by two double occupancy rooms.</p>	<p style="text-align: center;"><b>Robert May Hall</b></p> <p>Single, double, and triple bedroom apartments with 12-month contracts for graduate and professional students. Formerly the West Locust Lofts.</p>
--	--	--

### **Off-Campus Housing Accommodations:**

There are many apartment possibilities nearby SLU's campus. If you are interested in learning more about off-campus housing options, please contact the Office of International Services.

### **Health Insurance**

All international students must have adequate health insurance for the duration of their stay in the United States. Neither the U.S. government nor the University pays for medical care. You may purchase insurance through agencies in your home country, agencies in the U.S., from your embassy, or you may enroll in the University's student health plan.

Enrollment in an adequate plan must occur either before or shortly after your arrival. If you decide to purchase health insurance from Saint Louis University upon your arrival, your coverage will begin on the first day of classes. You may also purchase supplemental insurance that will provide coverage from the time you arrive in the United States until your coverage begins with Saint Louis University. Saint Louis University has coordinated a policy through **Lockton Companies** for this supplemental coverage.

Saint Louis University health insurance charges are automatically applied to your semester bill unless you complete a **health insurance waiver form** and show proof of personal insurance, in which case the SLU insurance fee is waived.

If you would like information about the University's student health insurance, please visit the **University Health Plan website**.

### **Visa Information**

International exchange students will require a visa to study at St. Louis campus of Saint Louis University. Students are encouraged to review the necessary visa requirements and schedule an appointment at the U.S. embassy or consulate as soon as possible. As soon as the student has scheduled an appointment, please inform the appropriate international admission counselor or have the student email his/her visa status to [international@slu.edu](mailto:international@slu.edu).

<http://www.slu.edu/international-services/visa/index.php>

### **Student Fees**

Inbound exchange students will be charged Saint Louis University Full Time Students. For the 2017-2018 academic year, these fees total \$312.50 per semester and include the following:

#### **Wellness Fee (\$90)**

Funds the recent expansion and renovation of the Simon Recreation Center and programs provided by the Student Health and Counseling Center.

**Technology Fee (\$100)**

Funds the University's campus-wide wireless network initiative.

**Union Fee (\$50)**

Funds payment on the University's recently renovated Busch Student Center.

**Student Activity Fee (\$55)**

Funds student organizations and campus programming.

**Readership Fee (\$2.50)**

Provides daily copies of *The New York Times*, *St. Louis Post Dispatch* and *USA Today* on campus.

**Athletic Fee (\$15)**

Provides the undergraduate student population admission to all Billiken Athletic events, including 1,000 seats in the student section of Chaifetz Arena for men's basketball games.

These rates are subject to change for the 2018-2019 academic year and will be outlined on the following webpage:

<http://www.slu.edu/financial-aid/tuition-and-costs/fee-information.php>

**Airport Pick-Up Service & International Orientation**

The Office of International Services at Saint Louis University offers a comprehensive international student orientation for all new international students, including exchange students. During orientation, students will:

- Learn about important regulations and requirements for maintaining your visa
- Have a chance to go shopping
- Sign up for cell phone service and local bank accounts
- Meet with your Academic Advisor and register for classes
- Take required tests (TOEFL and SLUWE)
- Explore campus and learn about resources available to you
- Connect with other students and the SLU community
- Find support for your transition to life in a new country

The international orientation includes a complimentary airport pick-up service. Students will need to schedule their airport transportation by emailing [internationalservices@slu.edu](mailto:internationalservices@slu.edu).

Additional information regarding International Student Orientation and the Airport Pick-Up Service may be found on the following webpage:

<http://www.slu.edu/international-services/study/arrival/>